

# Digital security for the world of anywhere work



“We have to make sure that wherever employees are working, the data they receive is secure, no matter what devices they’re using.”

RON GUERRIER  
CIO at HP



INDUSTRY:  
Information  
technology



COUNTRY:  
Global/company-wide

## Help employees feel secure, wherever they are

Anywhere work comes with all-around security risks. When HP moved its workforce of 70,000 employees and contractors to a hybrid model, the umbrella of devices it had to protect expanded exponentially.

HP had to ensure that they could:

- Meet today’s rising security challenges
- Guard employee data
- Make layers of security transparent and automated
- Keep software up to date
- Ensure security policy compliance

# Three of the key solutions supporting the HP security approach include:

## HP SURE CLICK ENTERPRISE<sup>1</sup>

A software solution that secures against threats or malware by isolating and containing security threats

## HP WOLF SECURITY<sup>2</sup>

A portfolio of hardware, software, and services that secures PCs and printers for the work-from-anywhere world

## HP ADAPTIVE ENDPOINT MANAGEMENT<sup>3</sup>

An endpoint management service that migrates legacy, on-prem management to modern cloud practices

# Making IT security seem seamless

HP faced an expanded attack landscape in which every PC and printer was a direct path to its network. The company knew it had to protect all the endpoints all the time, from every angle and any place.

HP's priorities for its cloud-based digital revolution:

- Provide uninterrupted IT support
- Use predictive analytics to recognize patterns of vulnerability
- Automate endpoint management to keep security software up to date
- Implement a multi-layered security approach



## How HP achieved it

The HP CISO and Security team looked to their own extensive arsenal of services and chose the HP Adaptive Endpoint Management, HP Sure Click Enterprise, and HP Wolf Security components to protect its growing hybrid work environment.

### AUTOMATED SECURITY POLICIES

HP Adaptive Endpoint Management helps automate security updates from the cloud. When a cyberthreat is on the horizon, employees no longer have to wait until they are back on a corporate network—they can get the latest patches and upgrades from anywhere.

Adaptive Endpoint Management enabled HP to rationalize its device management practices by streamlining policy management and using a corporate-ready device image.

### VIGILANT PROTECTION FOR END USERS

HP Sure Click Enterprise isolates key applications in their own micro-virtual containers—trapping and deleting risky programs, viruses, and malware as soon as the task is closed, keeping them from infecting the PC or network.

### BUILT-IN DEVICE PROTECTIONS

HP Wolf Security provides hardware-enforced full stack security that works below, in, and above the OS. IT departments are better able to improve lifecycle management as well as incident and disaster recovery while helping security teams minimize risk and increase team productivity—without interruption to employees.

“HP Wolf Security has really added another level of defense depth for us.”

SHARON BOTTOME

Head of Employee and Infrastructure Services at HP





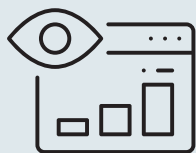
“The more we can use technology that acts on its own in a way that’s unobtrusive to the end user, the more the humans can focus on what humans are best at.”

JOANNA BURKEY

Chief Information Security Officer at HP



Preemptive, layered protection



Faster visibility into problems



Reduced IT and security teams support burden



Less employee downtime

#### IT IMPACTS AND OUTCOMES

- Better control over potential risks by automating patches and upgrades
- Peace of mind by isolating security threats and preventing breaches

#### BENEFITS TO EMPLOYEES

- Greater productivity through a security environment that updates automatically
- Freedom to work safely from anywhere, thanks to deep but frictionless layers of security
- Less downtime brought on by cyberattacks





## Security for the everywhere office

Remote. On-site. On the go. There's an easier way for IT to meet today's work-from-anywhere security challenges. Learn how HP Services experts can help secure your journey to the cloud.

WATCH THE CASE STUDY VIDEO NOW  
AT [HP.COM/SERVICES-SECURITY](https://hp.com/services-security)



<sup>1</sup>HP Sure Click Enterprise is sold separately. Supported attachments include Microsoft Office (Word, Excel, PowerPoint) and PDF files, when Microsoft Office or Adobe Acrobat are installed. For full system requirements, please visit System Requirements for HP Sure Click Enterprise for details.

<sup>2</sup>HP Security is now HP Wolf Security. Security features vary by platform. Please see product data sheet for details.

<sup>3</sup>HP Adaptive Endpoint Management requires separately purchased Microsoft 365 Enterprise (E3 or E5), Azure Subscription, and PowerBI licenses. Some HP security features must be provisioned separately using the HP Manageability Integration Kit. Contact your HP account representative or authorized HP reseller for more information. Other third-party software may be required. HP Adaptive Endpoint Management OS support includes Windows as base, with Android and iOS support as an optional, paid-for additional service.

Microsoft and Windows are either registered trademarks or trademarks of Microsoft Corporation in the United States and/or other countries.

HP Services are governed by the applicable HP terms and conditions of service provided or indicated to Customer at the time of purchase. Customer may have additional statutory rights according to applicable local laws, and such rights are not in any way affected by the HP terms and conditions of service or the HP Limited Warranty provided with your HP Product.

© Copyright 2022 HP Development Company, L.P. The information contained herein is subject to change without notice. The only warranties for HP products and services are set forth in the express warranty statements accompanying such products and services. Nothing herein should be construed as constituting an additional warranty. HP shall not be liable for technical or editorial errors or omissions contained herein.

4AA8-2024ENW, September 2022